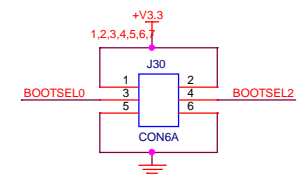
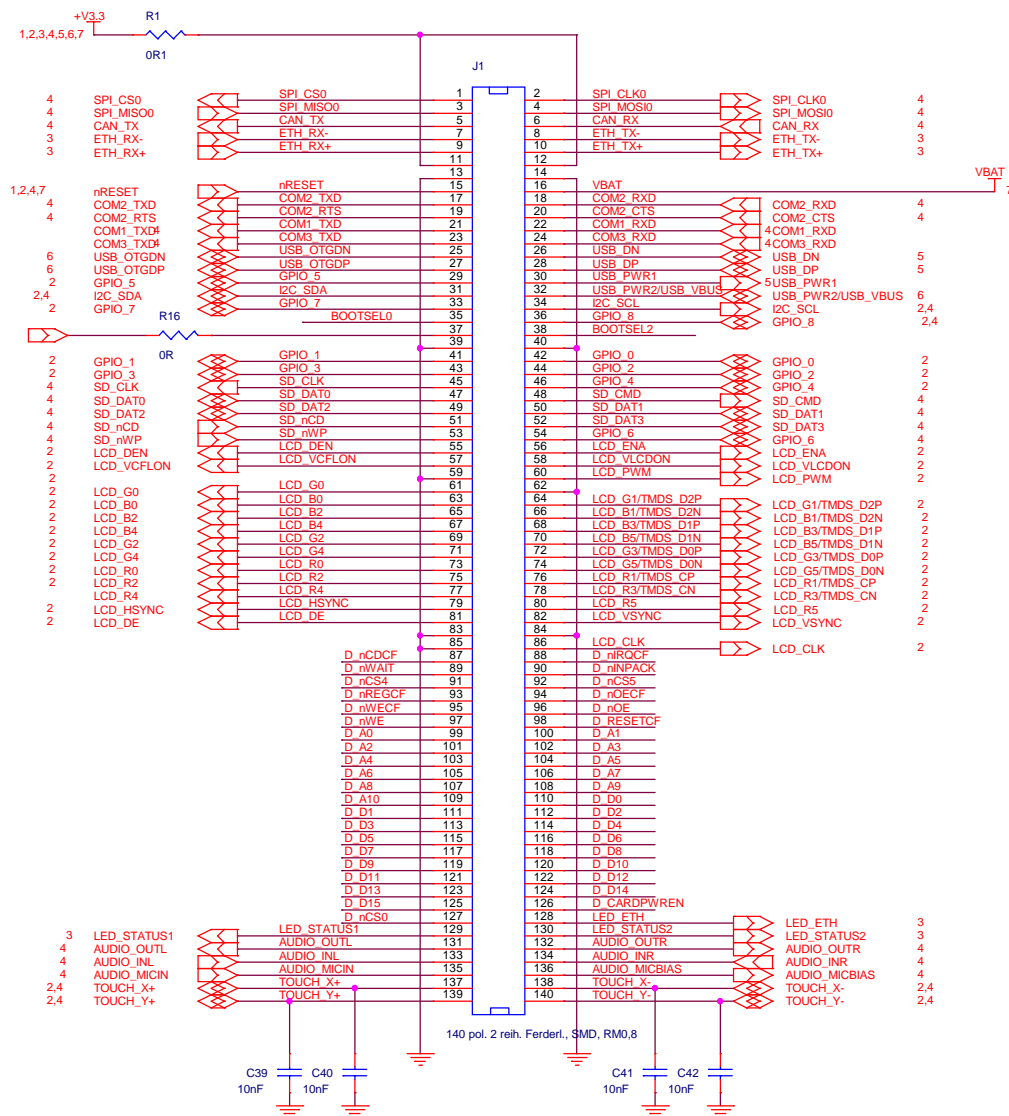


# PicoMOD-Startintf Rev. 1.00

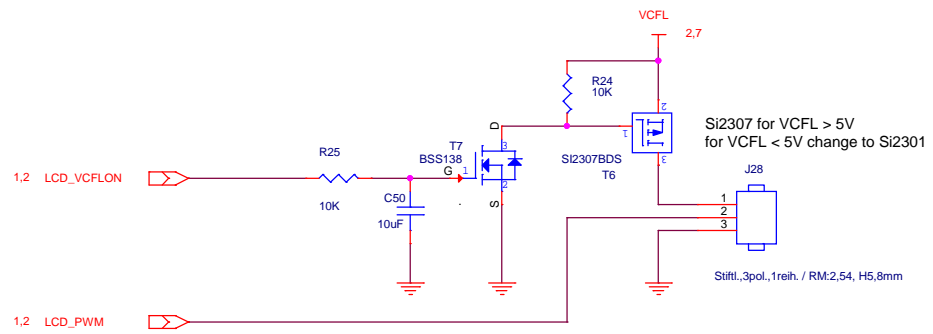
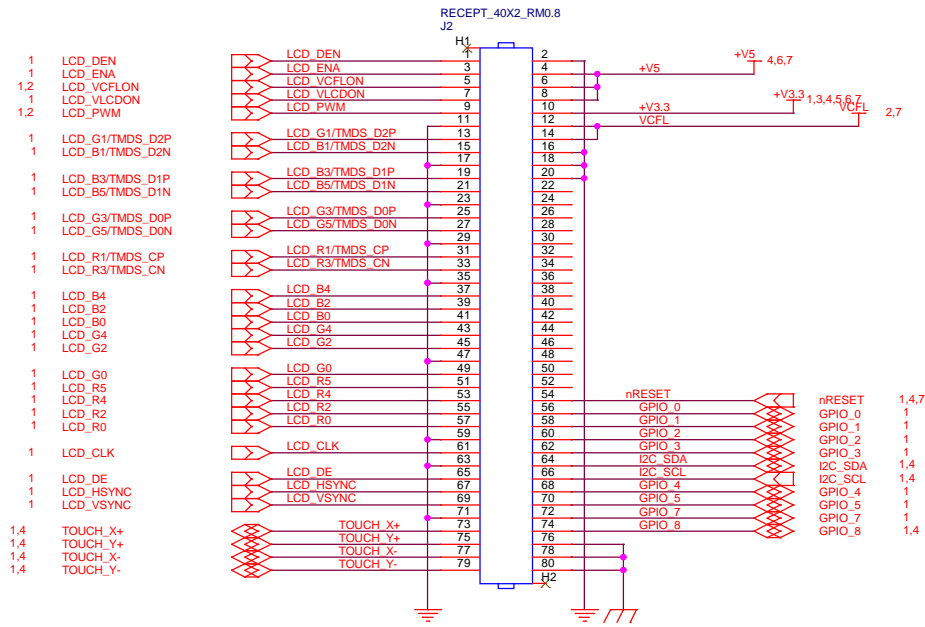
- 01) Title
- 02) PicoMOD Connector
- 03) Display Interface
- 04) LAN
- 05) I/O
- 06) USB Hub
- 07) USB Connector
- 08) Power
- 09) Legacy LCD Adapter
- 10) Hitachi LCD Adapter
- 11) EDT LCD Adapter
- 12) HDMI Adapter
- 13) Camera Adapter

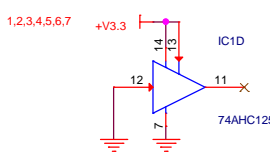
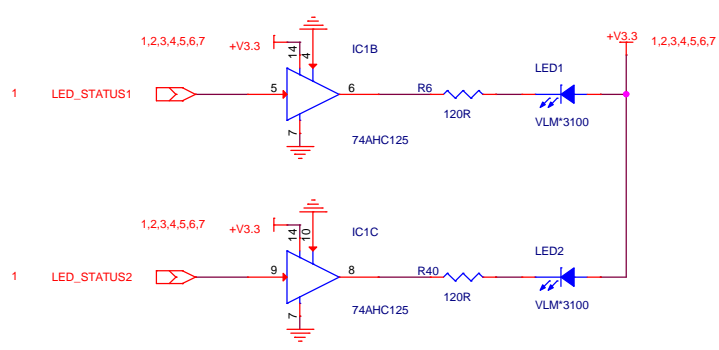
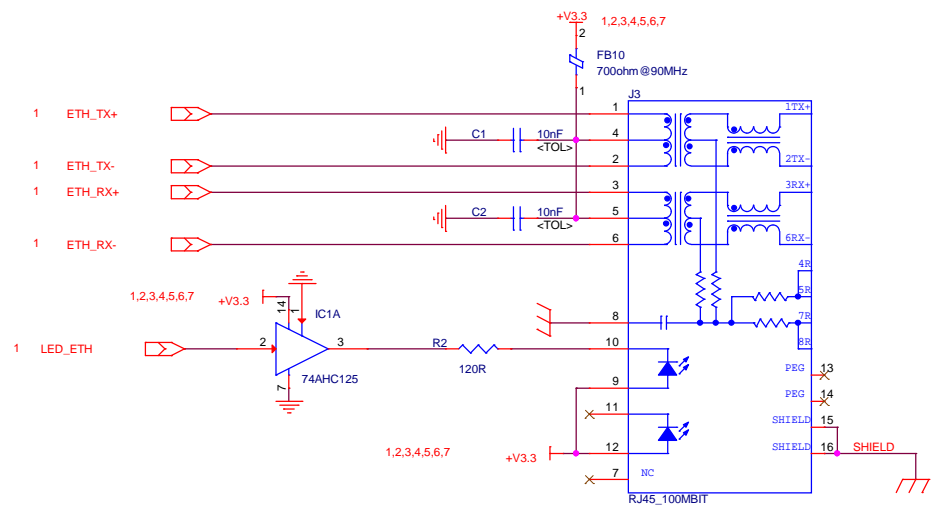
Setting R16 prevents booting of LVDS version of PicoMOD7

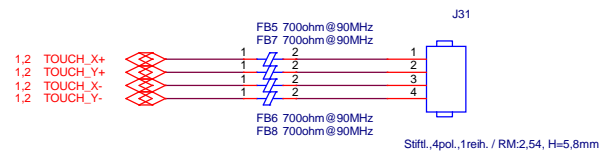
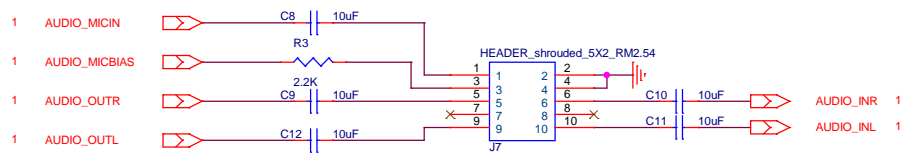
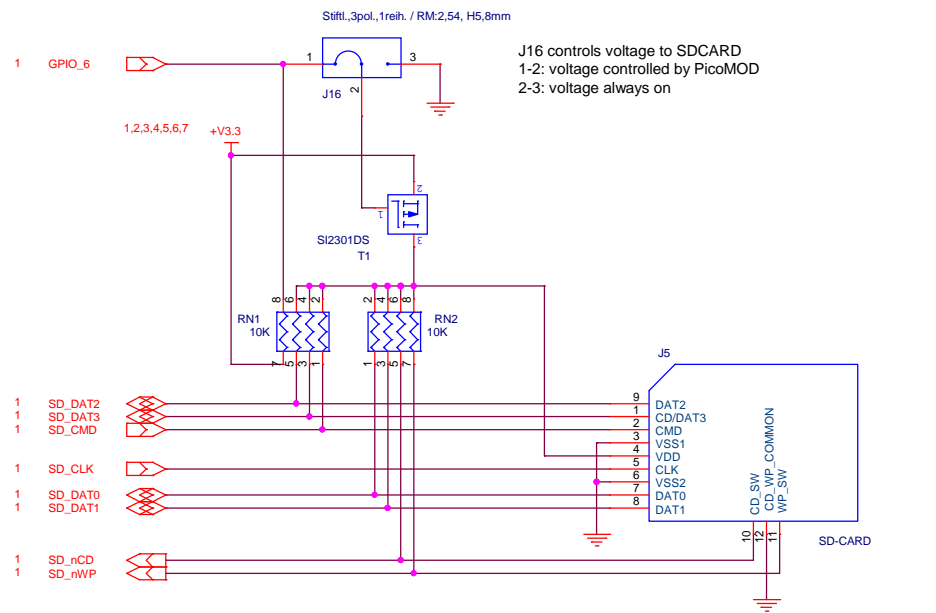
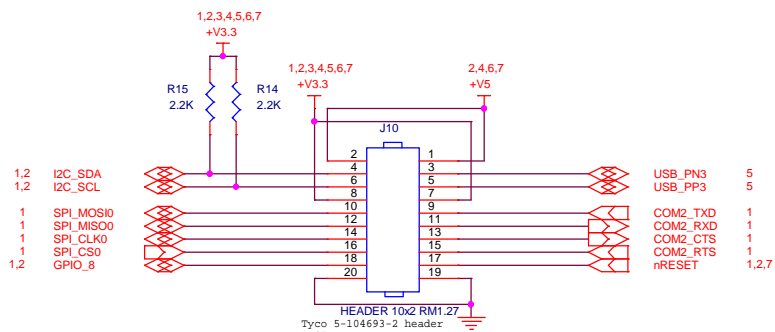
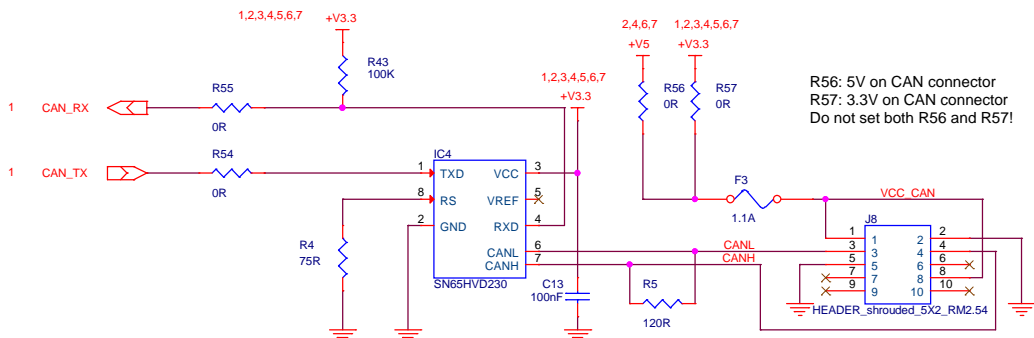
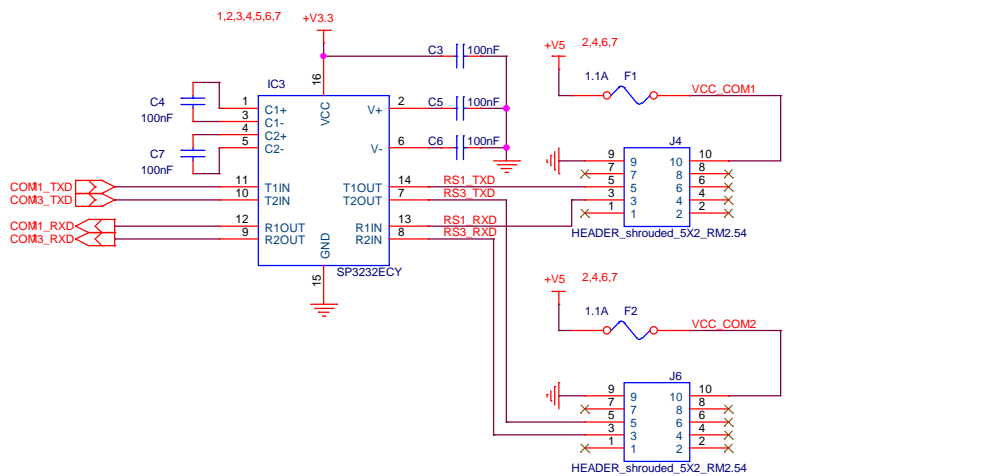
1,2,4,7 nRESET



J30: Boot device selection not used for normal operation





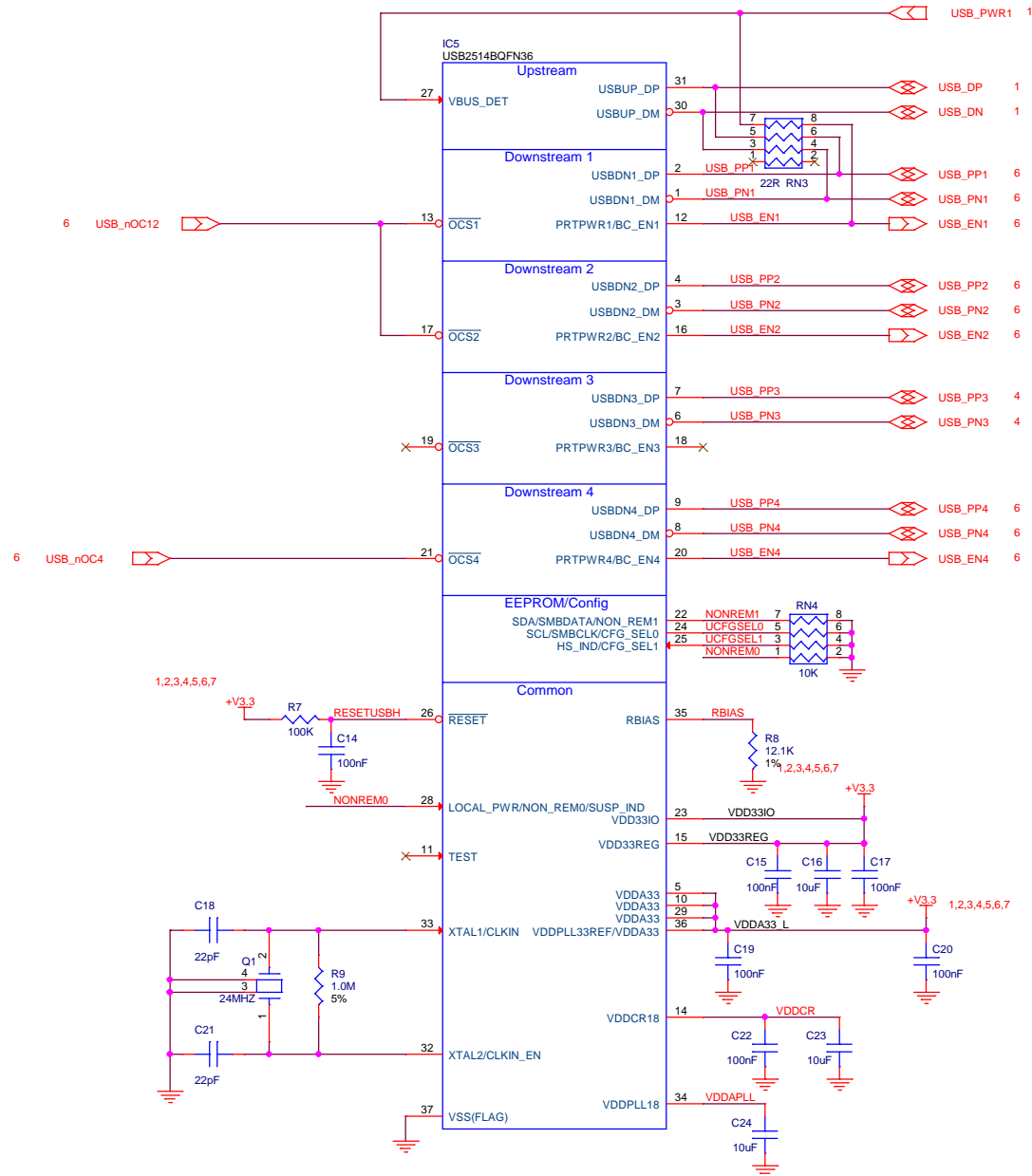


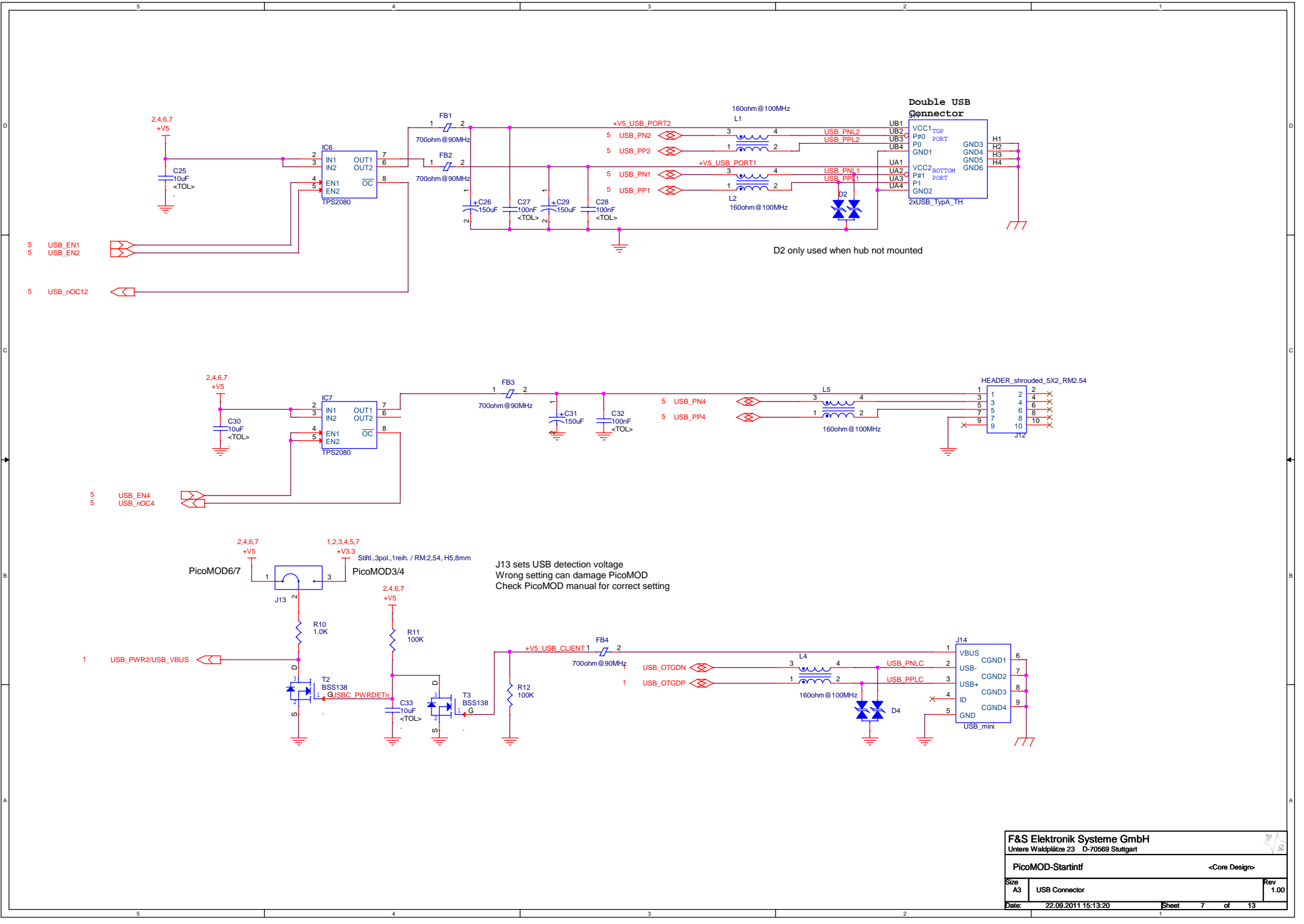
F&S Elektronik Systeme GmbH  
Untere Wacklplätze 23 D-70569 Stuttgart

PicoMOD-Startintf <Core Design>

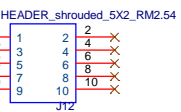
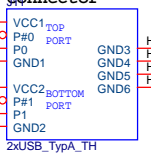
Size	A3	I/O	Rev	1.00
Date:	22.09.2011 15:13:19		Sheet	5 of 13

RN3 only set when hub not mounted

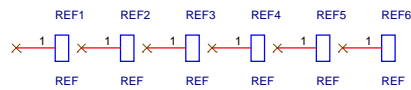
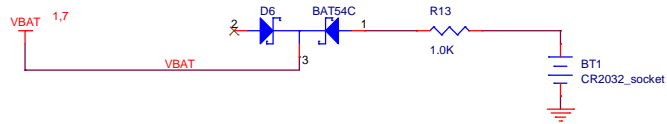
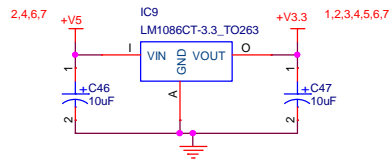
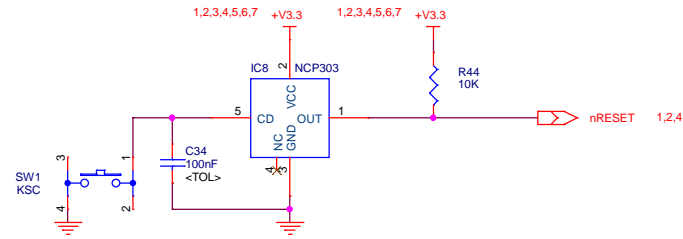
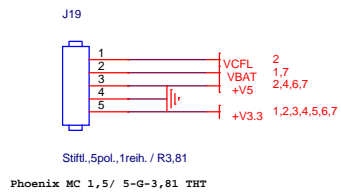




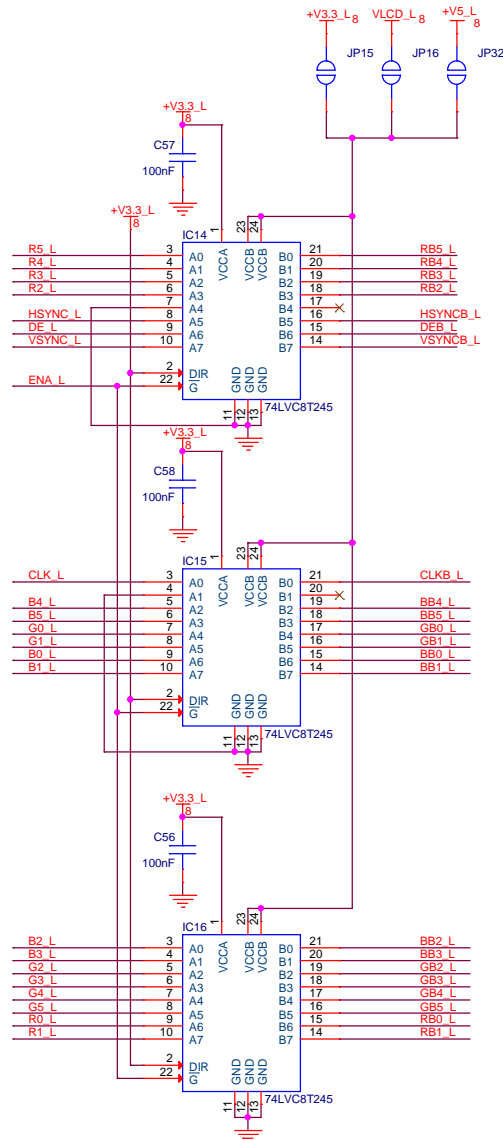
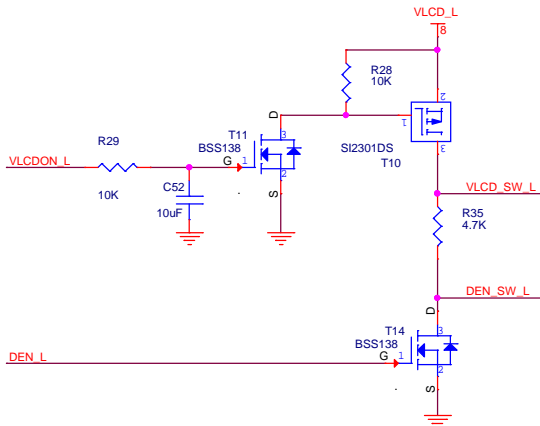
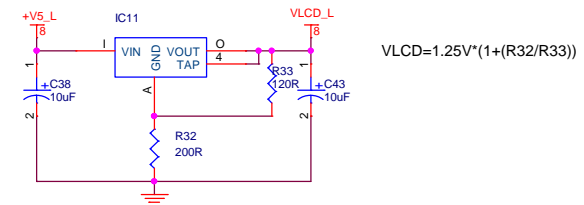
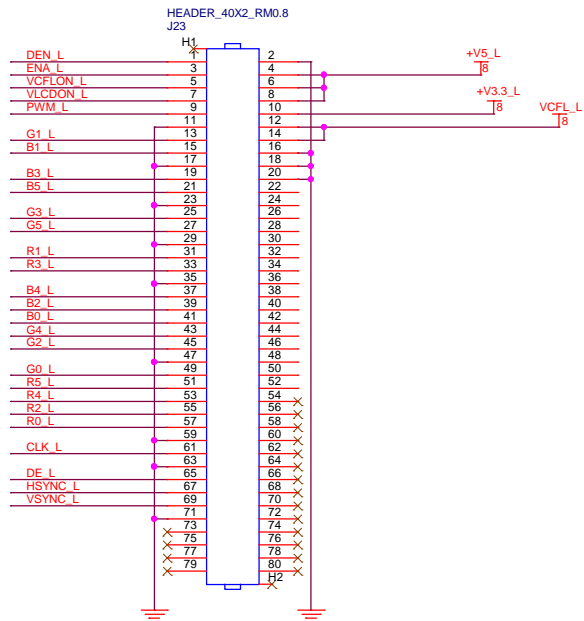
**Double USB Connector**



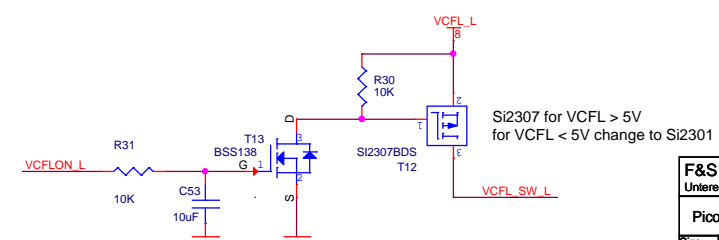
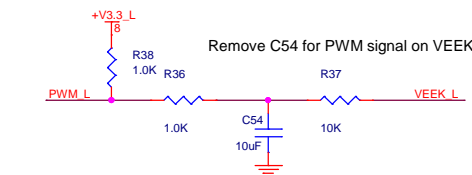
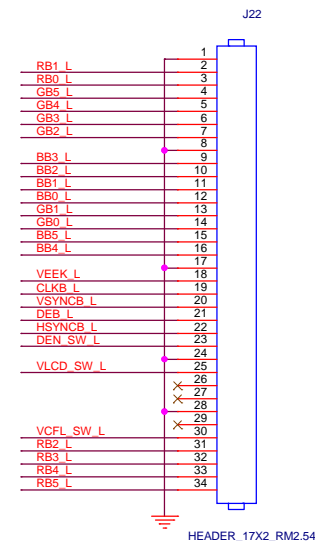
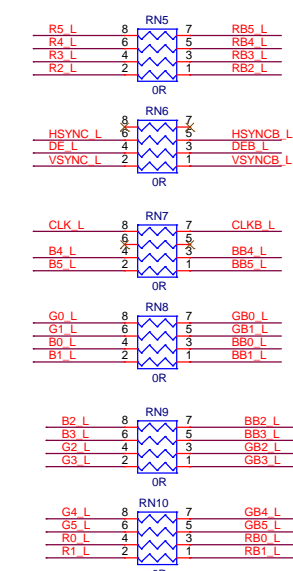
J13 sets USB detection voltage.  
Wrong setting can damage PicoMOD.  
Check PicoMOD manual for correct setting

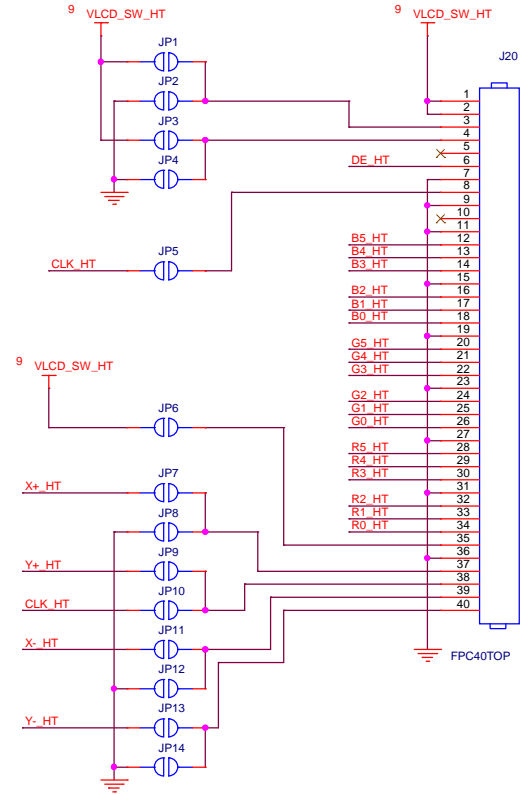
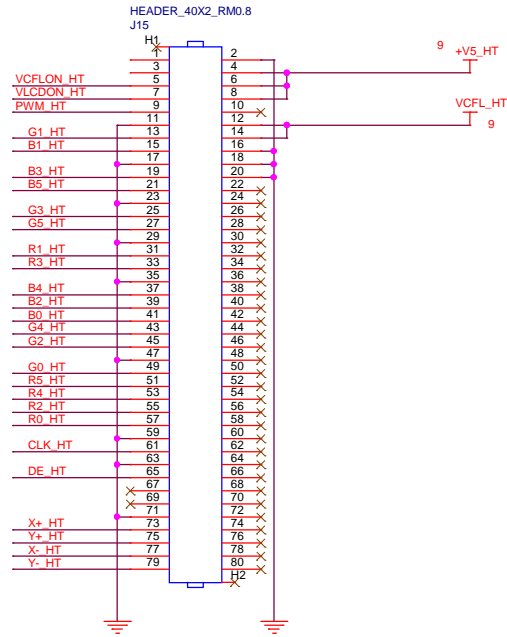




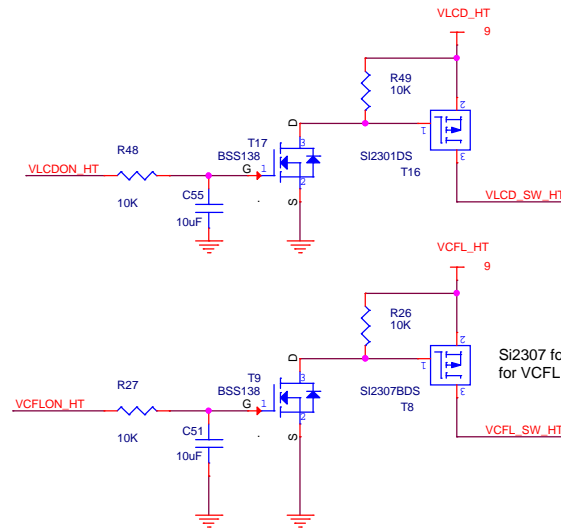


buffered: U1-U3  
 use 74LVC8T245 for real level shifting  
 use 74AHC245 for pseudo level shifting  
 unbuffered: RN5-RN10  
 use 0R for direct connection  
 use 0R < RN < 47R for series resistance  
 use ferrite bead array for high freq. filtering

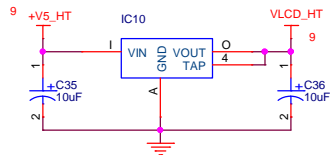
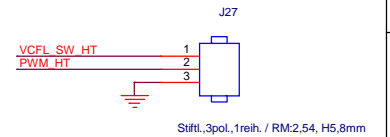


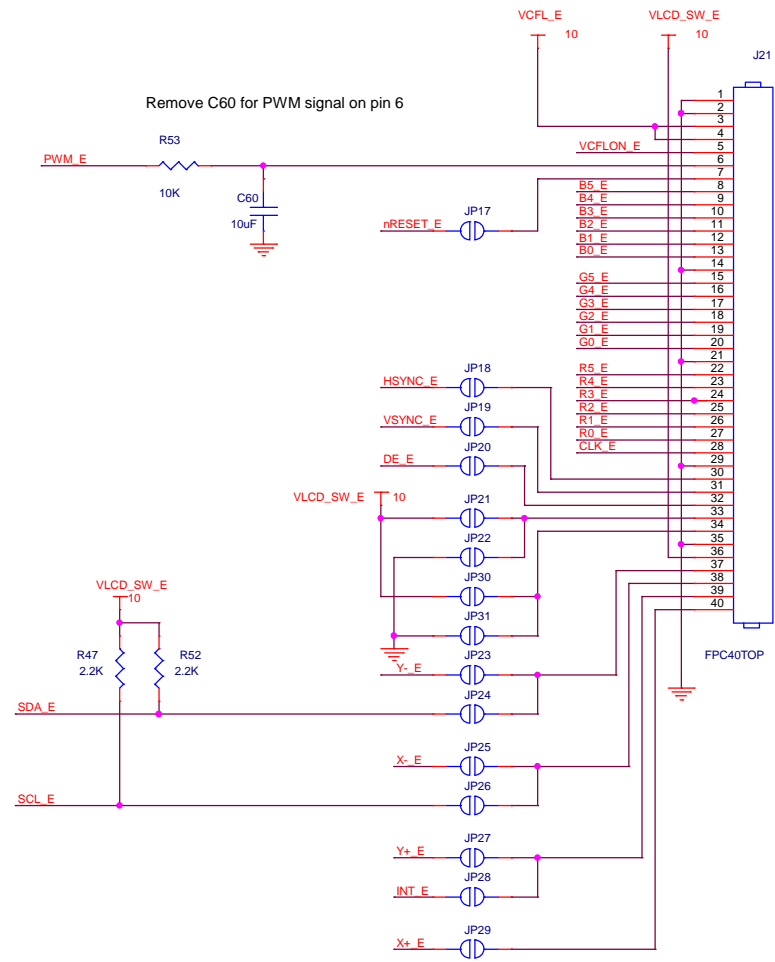
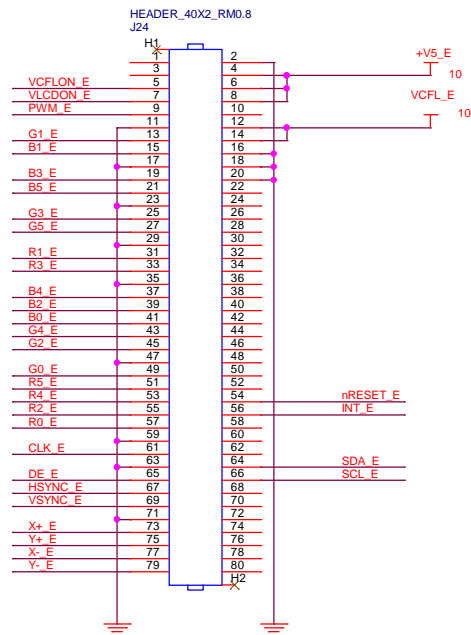


See display documentation and starter kit documentation for jumper settings

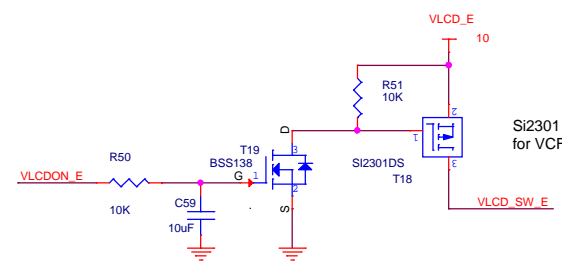
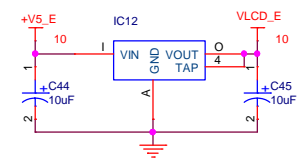


Si2307 for VCFL > 5V  
for VCFL < 5V change to Si2301

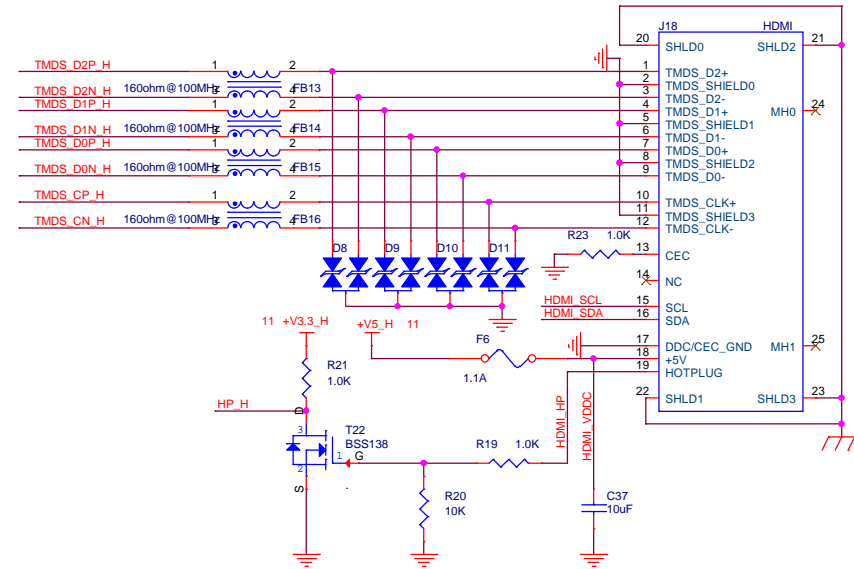
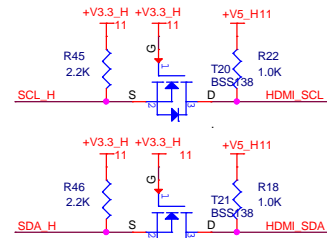
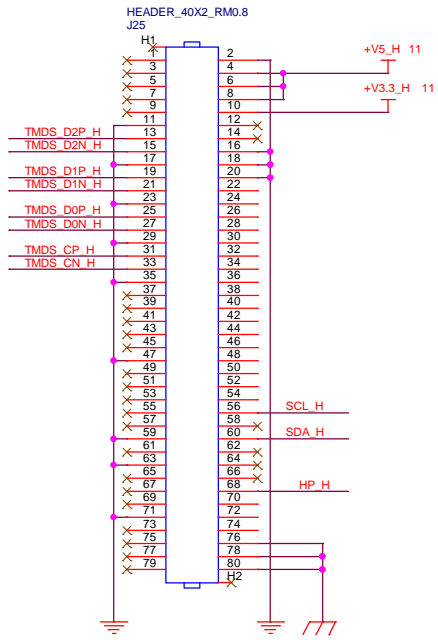




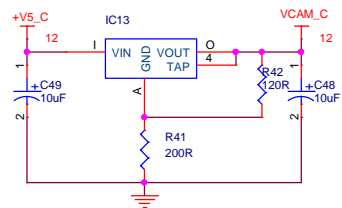
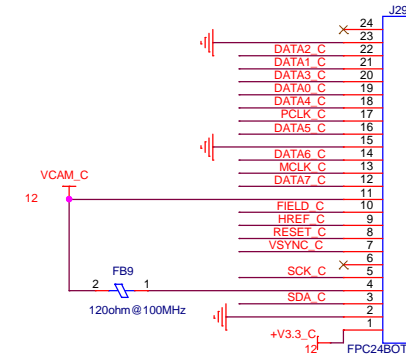
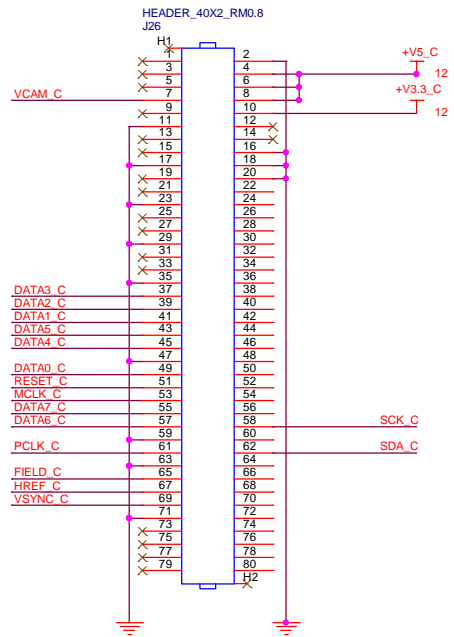
See display documentation and starter kit documentation for jumper settings



Si2301 for VCFL < 8V  
for VCFL > 8V change to Si2307



Do not use HDMI adapter with unsupported PicoMOD!



$$VCAM = 1.25V \cdot (1 + (R41/R42))$$

VCAM sets PicoMOD camera interface voltage (input to PicoMOD)  
Do not use camera adapter with unsupported PicoMOD!